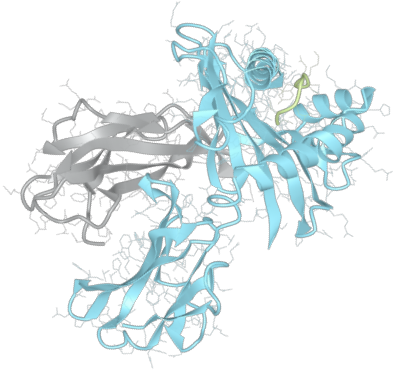


# Product datasheet

## sHLA-B\*42:01

B\*4201, B4201, B\*42, B42, B42



<b>Serological Name</b>	B42
<b>Peptide Load</b>	Endogenous
<b>Modification</b>	Unmodified
<b>Conjugation</b>	Unconjugated
<b>SKU</b>	B4201

### Product Description

<b>Allele Name</b>	B*42:01 B2m
<b>HLA Class</b>	HLA Class I
<b>HLA Gene Locus</b>	HLA-B
<b>Alternative Allele Name A Chain</b>	B*4201, B4201, B*42, B42, B42
<b>Alternative Allele Name B Chain</b>	-
<b>Description</b>	Recombinant, truncated Class I soluble Human Leukocyte Antigen (sHLA), naturally folded and glycosylated, loaded with endogenous peptides.
<b>Serological Name</b>	B42
<b>Serological Split</b>	-
<b>Bw4/Bw6 Assignment</b>	Bw6
<b>Bw4/Bw6 Sequence</b>	SLRNLRG
<b>Allele Frequency [World Population]</b>	
<b>A chain</b>	1.6%
<b>B chain</b>	-

### Associated products

[B4201bio](#)  
[B4201pe](#)

## Product Specification

<b>Product name</b>	HLA-B*42:01
<b>HLA Species</b>	Human
<b>Host Cell Line Species</b>	Human
<b>Clone Designation</b>	E9H7
<b>Tail Specification</b>	VLDL
<b>Peptide Load</b>	Endogenous
<b>Modification</b>	Unmodified
<b>Conjugation</b>	Unconjugated
<b>Complexity</b>	Monomer
<b>Protein Format</b>	Recombinant, truncated, soluble, non-modified, non-labeled, endogenously loaded
<b>Storage Temperature</b>	4 °C (This product should be stored undiluted)
<b>Form</b>	Liquid
<b>Concentration</b>	1000.0 µg/ml
<b>Formulation</b>	PBS/0.02% Sodium Azide
<b>pH</b>	7.4
<b>Purification Method</b>	Affinity Chromatography
<b>Grade</b>	Research Use Only [RUO]
<b>Authentication Verification</b>	Sequence Based Typing

## Protein Sequences

<b>Alpha Chain Sequence</b>	GSHSMRYFYT SVSRPGRGEP RFIISVGYVDD TQFVRFSDSA ASPREEPRAP WIEQEGPEYW DRNTQIYKAQ AQTDRSLRN LRGYYNQSEA GSHTLQSMYG CDVGPDRLL RGHNQYAYDG KDYIALNEDL RSWTAADTAA QITQRKWEAA RVAEQDRAYL EGTTCVEWLR YLENGKDTLE RADPPKTHVT HHPISDHEAT LRCWALGFYP AEITLTWQRD GEDQTQDTEL VETRPAGDR FQKWAAVVVP SGEEQRYTCH VQHEGLPKPL TLRVSVSTDD DLA
<b>Beta Chain Sequence</b>	IQRTPKIQVY SRHPAENGKS NFLNCYVSGF HPSDIEVDLL KNGERIEKVE HSDLSFSKDW SFYLLYYTEF TPTEKDEYAC RVNHVTLSP KIVKWRDM

## Related Products

[B4202](#)  
[A0201](#)  
[A0301](#)  
[B0702](#)

## Applications

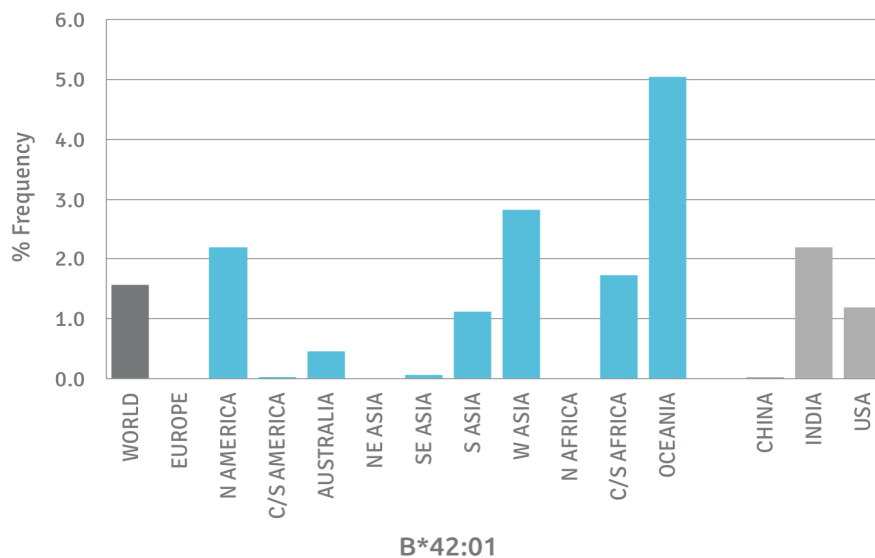
HLA Sandwich ELISAs  
 HLA Direct ELISAs  
 HLA-Sera Antibody Assays  
 HLA Controls in ELISA Assays  
 HLA Assay Standards  
 HLA Blocking Assays  
 HLA Neutralizing Assays  
 HLA Competition Assays  
 HLA Bead Assays  
 HLA Immunization Procedures

## Recommended Antibodies

W6/32  
 Anti-B2m

## Allele Frequency

### Worldwide Allele Frequency



Please note:

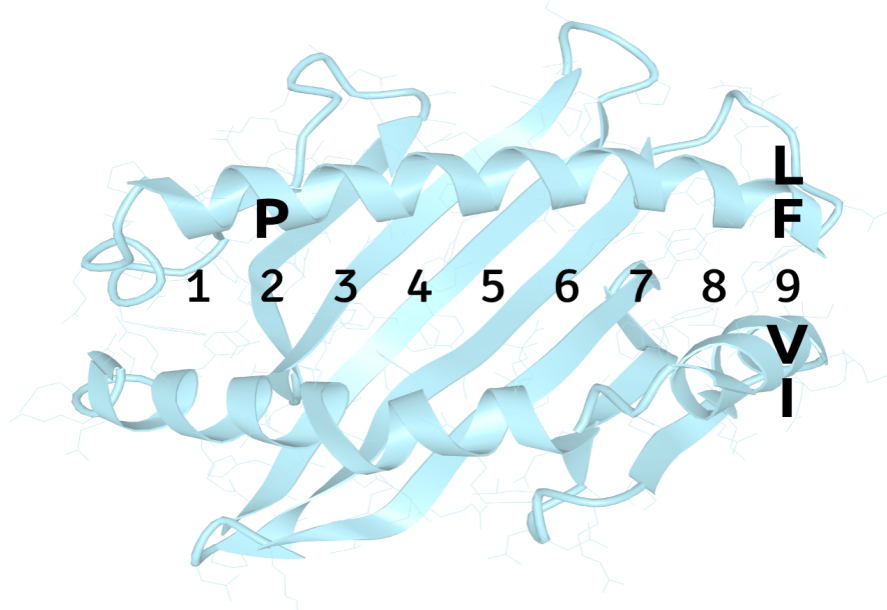
ALL PRODUCTS ARE FOR RESEARCH USE ONLY. NOT FOR COMMERCIAL USE IN DIAGNOSTIC PROCEDURES.  
 For more information, please visit our Policies section on our website. For licensing inquiries, please contact

[licensing@hlaprotein.com](mailto:licensing@hlaprotein.com)



## Motif

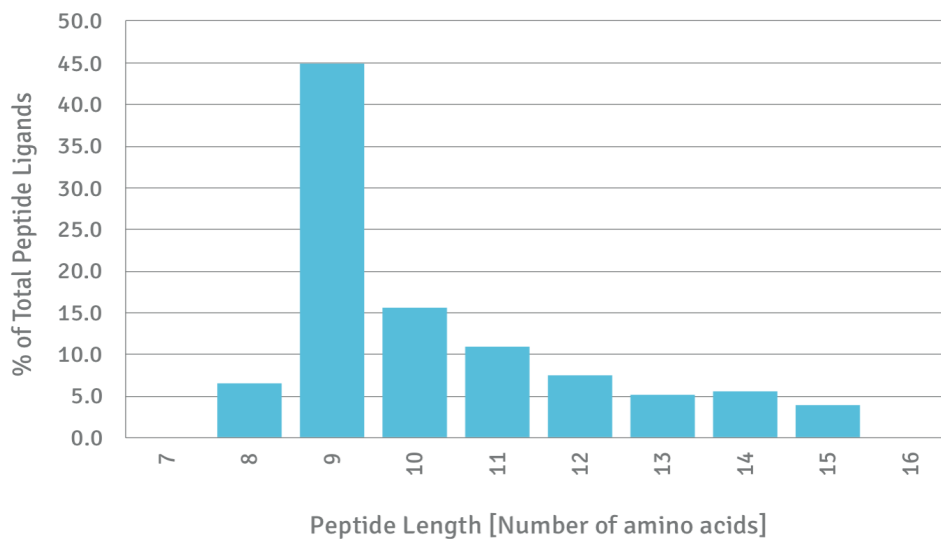
### B\*42:01 BINDING MOTIF



## Length Distribution

### HLA Length Distribution

**B\*42:01**



Please note:

ALL PRODUCTS ARE FOR RESEARCH USE ONLY. NOT FOR COMMERCIAL USE IN DIAGNOSTIC PROCEDURES.

For more information, please visit our Policies section on our website. For licensing inquiries, please contact

[licensing@hlaprotein.com](mailto:licensing@hlaprotein.com)

